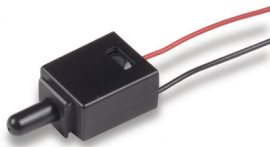


# KDS Series Intrusion Switches



## Features/Benefits

- Slot mount into chassis to reduce installation cost
- Wire harness length & connector easily customized
- Available in N.O. or N.C. configuration
- RoHS compliant

## Typical Applications

- Intrusion/Alarm switch in network desktop PC
- Intrusion/Alarm switch in telecommunication equipment
- Intrusion/Alarm switch in cellular base station

## Specifications

CONTACT RATING: 0.4 VA max. @ 20 V AC or DC.  
 MECHANICAL & ELECTRICAL LIFE: 10,000 actuations min. at full load.  
 CONTACT RESISTANCE: 200 m Ω max. initial @ 2-4 V DC, 100mA.  
 INSULATION RESISTANCE: 10<sup>9</sup> Ω min.  
 OPERATING TEMPERATURE: -40°C to +85°C  
 TRAVEL: KDS11: Travel to make from 1.9 mm to 5.9 mm\*  
           KDS33: No pre-travel, full travel 0.403"  
 DIELECTRIC STRENGTH: 500 Vrms min. @ sea level.  
 PACKAGING: Bulk packaging.

## Materials

HOUSING: Nylon 6/6 (UL 94V-0)  
 ACTUATOR: Nylon 6/6 (UL 94V-0)  
 MOVABLE CONTACT: Copper alloy, gold plate over nickel plate.  
 FIXED CONTACT: Brass, gold plate over nickel plate.  
 WIRE: UL 1061-24 AWG.

**NOTE:** Specifications and materials listed above are for switches with standard options. For information on specific and custom switches, consult Customer Service Center.

\* For information

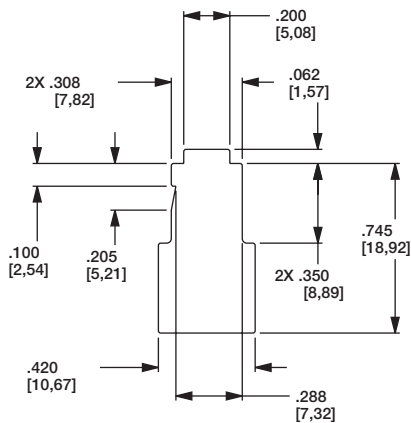
## How To Order

Complete part numbers for KDS Series Switches are shown below.

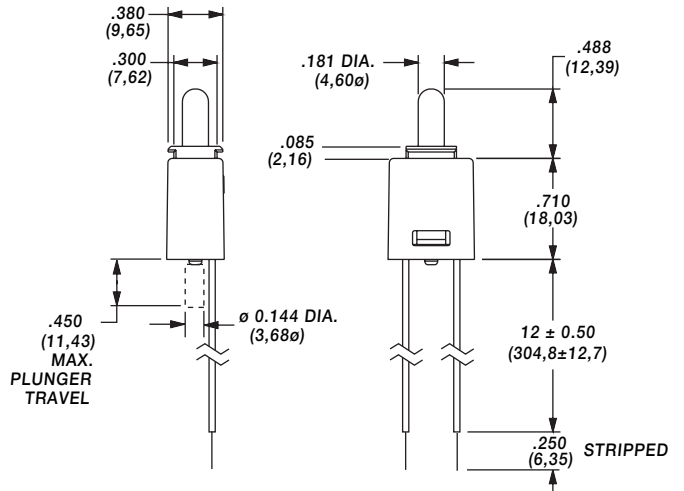
PART NUMBER	SWITCH FUNCTION		SCHEMATIC
	POS. 1	POS. 2	
<b>KDS11</b>	OFF	MOM.	SPST N.O.
<b>KDS33</b>	ON	OFF	SPST N.C.



KDS33



PANEL CUT-OUT  
THICKNESS 1,02



.450 [11,43] MAX. PLUNGER TRAVEL

STRIPPED

Detect